

WinCom PLUS

Serial Communications, Data Management and Plotting Program.

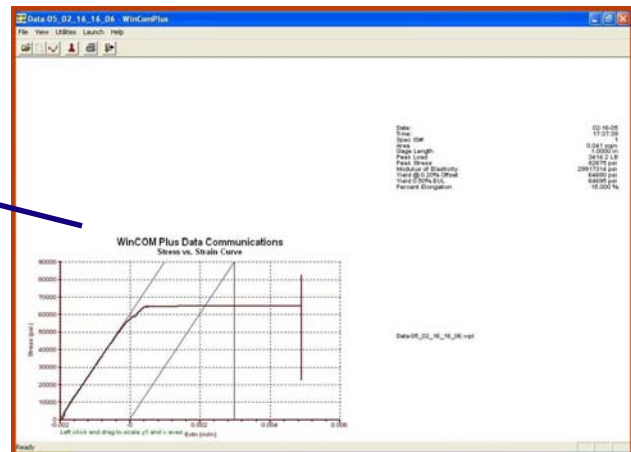
Unlock the power of your ADMET controlled testing machine by automating your data storage, improving your test documentation and increasing your test diagnostic capabilities!

Transmit raw test data and test results from your ADMET digital indicator to your computer and:

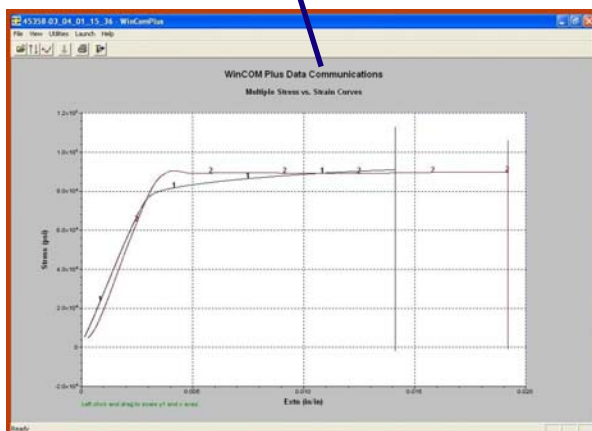
- Eliminate data entry errors by importing test results into your client reports.
- Save test results to your company network for easy access and safe keeping. Never loose data.
- Use the plotting features to ensure that your tests are being performed to ASTM specifications.
- Save money and aggravation by eliminating the need for a printer at your testing machine.

Use WinCom PLUS to produce test reports that contain the stress strain/ curve, the test results as well as the modulus, offset yield and yield EUL lines.

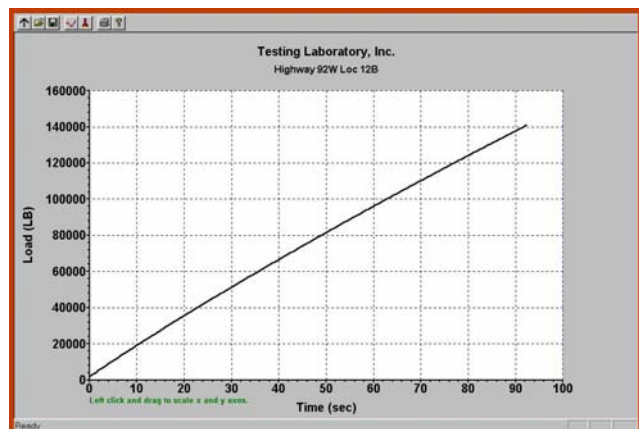
Use WinCom PLUS to plot up to 10 curves on one graph.



Complete test report with stress/strain curve and test results.



Data from multiple tests plotted on the same graph



Load versus Time Plot :
Verify that test loading rate meets ASTM specifications



'Measure the Difference'

Cal-Cert Company
P.O. Box 416, Clackamas, OR 97015
tel: 800-356-4662 fax: 503-654-9670
info@cal-cert.com www.cal-cert.com

WinCom and WinCom PLUS Features.....

WinCom software provides the same serial communications capabilities as WinCom PLUS software, but without the plotting capabilities.

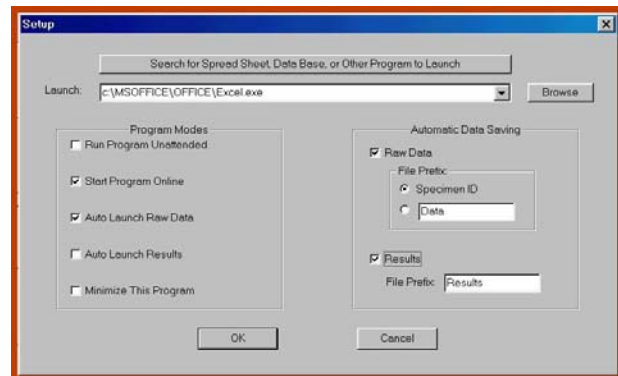
WinCom and WinCom PLUS software work with all current ADMET digital indicators that have serial communications capabilities including the Gauge Buster, Gauge Buster PLUS, DC16 and Precise Digital Controller.*

WinCom and WinCom PLUS software are easy-to-use Windows 2000/XP compatible programs.

WinCom and WinCom PLUS software are invaluable tools for analyzing test data and diagnosing the performance of a testing machine. Use WinCom and WinCom PLUS to analyze whether your testing is being performed at the desired load, position or strain rates.

Use WinCom PLUS to:

- View and print load/stress vs. time or load/stress vs. strain plots. Overlay up to 10 curves on one graph.
- View modulus, offset yield and yield EUL curves on stress vs. strain curves.
- Copy stress vs. strain curves into spreadsheet and word processing programs.
- Recall files and view or print load/stress vs. time or load/stress vs. strain plots at any time.



Simple menu allows easy setup of saving configurations.

Use WinCom or WinCom PLUS to:

- Automatically capture test results and raw test data.
- Automatically launch and view results and raw test data in common spreadsheet programs like Microsoft Excel.
- Run in unattended mode and automatically save test results in ASCII comma delimited format.
- Run in unattended mode and automatically save raw test data in binary format for later viewing.
- Define a file name prefix and let WinCom/WinCom PLUS append a date and time stamp so that your files are easily identifiable.

DATE	TIME	SPEC	AREA	LENGTH	PEAK	CORR	BREAK
12/9/01	11:36:07	7714	28.24	12	99993	3639	1
12/9/01	11:36:32	7715	28.24	12	99993	3619	1
12/9/01	11:37:09	7716	28.24	12	100566	3632	1
12/9/01	11:37:27	7717	28.24	12	100768	3674	1
12/9/01	11:37:55	7718	28.24	12	100840	3783	1
12/9/01	11:38:23	7719	28.24	12	100929	3837	1
12/9/01	11:38:55	7720	28.24	12	100867	3794	1

Stat	Value
Low	99283
Mean	104193
High	109935
Range	10652
Stdev	3603
+3Sigma	115883
-3Sigma	92483

Store test results on your network computer and view in Microsoft Excel.

* For digitals manufactured before 2000 consult with factory to check digital's compatibility with WinCom and WinCom PLUS.